

Appendix A. Supplementary Figures

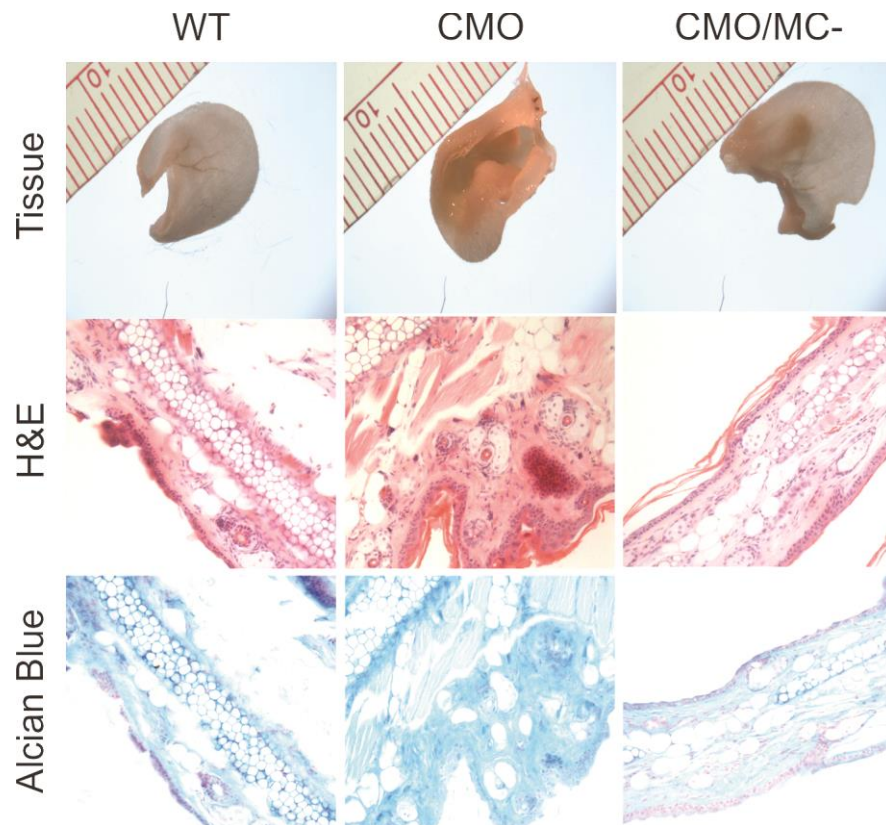


Fig. S1. Connective tissue mast cell density increases in CMO skin lesions and efficacy of mast cell ablation. Representative images of 5 month old WT, CMO and CMO/MC- male mouse tissues, including ears (upper panels) and ear tissue sections (lower panels) stained with H&E or Alcian blue.

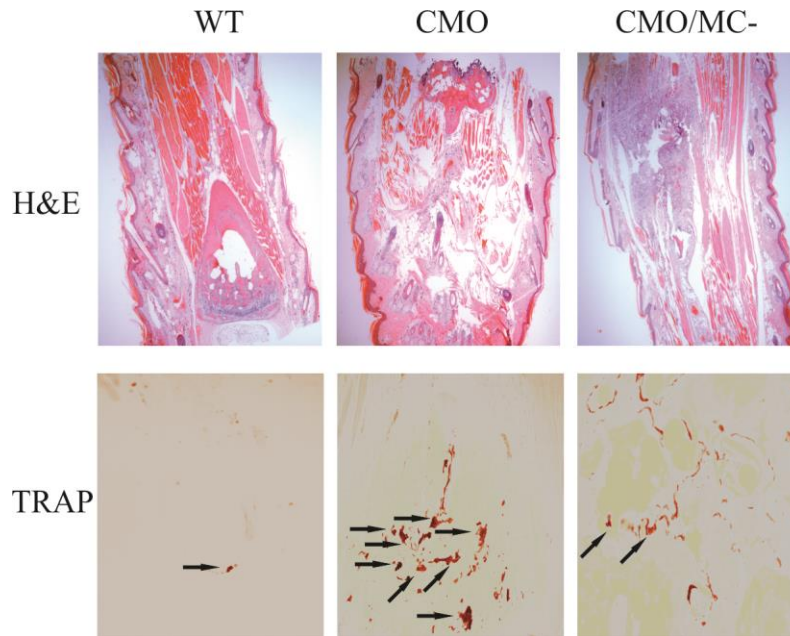


Fig. S2. Connective tissue mast cells promote osteoclast accumulation in CMO mice. Representative histological images of decalcified tail tissue sections stained with H&E (upper panels) and TRAP (lower panels) for male WT, CMO and CMO/MC⁻ mice at 5 months of age (arrows indicate TRAP⁺ osteoclasts).